

Member Newsletter



SEQUACHEE VALLEY
ELECTRIC COOPERATIVE

Your Touchstone Energy® Cooperative 

www.svalleyec.com

July 2011

New SVEC Tennol substation now on-line



This photo taken during construction features one of the two 25MVA transformers that are the core of the new "Tennol" substation.

The latest upgrade to Sequachee Valley Electric Cooperative's electric distribution system is the recent addition of the Tennol Substation in Kimball.

The substation, which is really two substations in one, features two 25 MVA transformers for a total capacity of 50 MVA.

What does that mean to our customers? According to SVEC Vice-President of Engineering, Danny Kirkendoll, it means that SVEC is now better able to carry the growing electrical load in the Kimball industrial park and in the growing residential areas of Kimball.

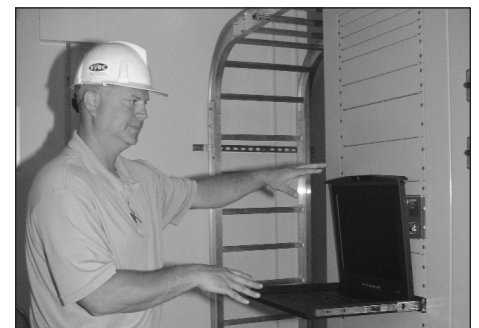
It also means that the Jasper substation and the current Kimball substation will get some relief on those high demand days that occur during the hottest days in summer and the coldest days in winter.

It means improved system reliability and efficiency which cuts down on the cost of delivering electricity to your home or business and helps keep electric rates as low as possible.

Named the "Tennol" substation because of its location near the old Tennol ethanol plant, it is a part of SVEC's twenty year long range plan to ensure that the cooperative can continue to provide safe, affordable, reliable power now and in the future.

The substation features the latest in technology to allow for better monitoring and operation.

Construction has already begun on the next addition to the system; a substation in Bledsoe County that will serve the new prison and residential areas of the Wheeler Mountain community.



SVEC Vice-President of Engineering, Danny Kirkendoll, points out the electronic monitoring system that will help identify problems with the system and the built in computer that will serve as the "brains" of the substation



The substation also features the most up-to-date environmental safety features. Each of the transformers is mounted on a concrete pad with a built-in drainage system that will divert any accidental oil spill to a holding tank for proper disposal.

Pole maintenance — An investment in the future



A contractor with OSMOSE, taps the pole to listen for signs of decay and then updates the GPS information on the pole's location.

The nearly 70,000 poles that support the approximately 2,900 miles of SVEC power lines are the "spine" of SVEC's distribution system.

Making sure that these poles are strong enough to hold up to the weight of the lines and the high winds of summer storms and the ice of winter storms is a never ending job that is vital to ensuring system reliability.

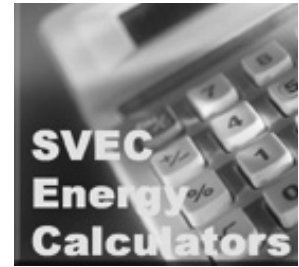
Each summer SVEC conducts a pole to pole inspection of about 10 percent of the poles on the system. A visual inspection and "tapping" to lis-

ten for a "hollow" sound is done on each pole under 10 years old. If a pole is ten years old or older a core sample is taken to look for wood rot.

During this inspection poles that need to be replaced are identified and marked according to priority.

This information is a valuable part of our long range plan of system maintenance. In addition, the contractors also check the GPS information on each pole to update our mapping system information and report any brush that needs to be cleared away.

Save Energy.
Save Money.
Win a \$50 Credit on
Your Electric Bill !



Visit www.svalleyec.com.

- Click on the SVEC Energy Calculator button
- Try out a few of the energy-saving tools
- Register for the monthly drawing through September 30
- Learn to save energy & money
- Get the chance to win a \$50 credit on your SVEC bill

Don't Get Caught Unprepared!

Keep your family informed with a weather radio from Midland.

Available at your local SVEC Office

\$34.95 plus tax.



Service Centers

97 Resource Rd, Dunlap
949-2198

3396 Main Street,
Pikeville
447-2131

512 South Cedar Avenue,
South Pittsburg
837-8605 or 1-800-923-2203

14002 Highway 41
Tracy City
592-2511

14087 Highway 28,
Whitwell
658-7832

After Hours: 1-888-421-SVEC

www.svalleyec.com

Storm Season is Here! Protect Your Home

Take advantage of SVEC's
Offer of
Free Installation

of
"The Shield"
Surge Protection
Program
Through July 31



Call your local SVEC office
to sign up

